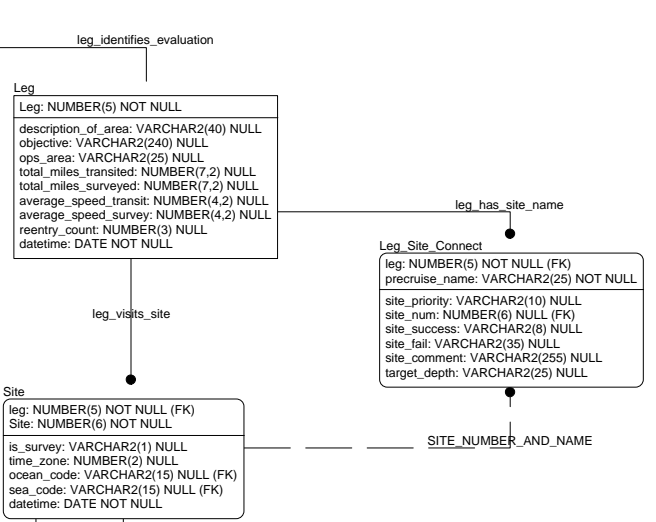
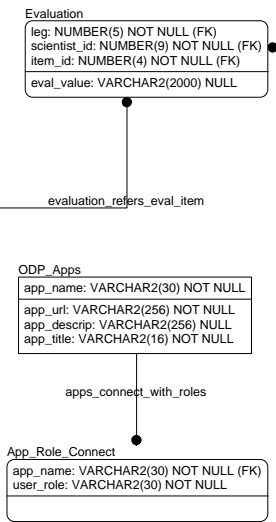
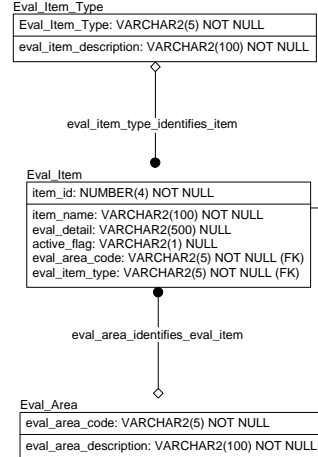


DB\_OVERVIEW

LEG: NUMBER(5) NOT NULL  
 SITE: NUMBER(6) NOT NULL  
 HOLE: VARCHAR2(1) NOT NULL

TOTAL\_CORE: NUMBER(10,2) NOT NULL  
 CORE\_COUNT: NUMBER(6) NOT NULL  
 SECTION\_COUNT: NUMBER(6) NOT NULL  
 SAMPLE\_COUNT: NUMBER(6) NOT NULL  
 GRA\_SECTION\_COUNT: NUMBER(6) NOT NULL  
 MSL\_SECTION\_COUNT: NUMBER(6) NOT NULL  
 NGR\_SECTION\_COUNT: NUMBER(6) NOT NULL  
 PWL\_SECTION\_COUNT: NUMBER(6) NOT NULL  
 PWS\_SECTION\_COUNT: NUMBER(6) NOT NULL  
 MAD\_SAMPLE\_COUNT: NUMBER(6) NOT NULL  
 THERMCON\_COUNT: NUMBER(6) NOT NULL  
 SHEAR\_STRENGTH\_COUNT: NUMBER(6) NOT NULL  
 COLOR\_REF\_SECTION\_COUNT: NUMBER(6) NOT NULL  
 MS2F\_SECTION\_COUNT: NUMBER(6) NOT NULL  
 DHT\_APCT\_RUN\_COUNT: NUMBER(6) NOT NULL  
 SPLICER\_COUNT: NUMBER(6) NULL  
 TENSOR\_CORE\_COUNT: NUMBER(6) NOT NULL  
 CRYMAG\_SECTION\_COUNT: NUMBER(6) NOT NULL  
 PALEO\_SAMPLE\_COUNT: NUMBER(6) NOT NULL  
 PALEO\_SAMPLE\_TAXON\_COUNT: NUMBER(6) NOT NULL  
 ACEPROFILE\_COUNT: NUMBER(6) NOT NULL  
 AGE\_DATAPPOINT\_COUNT: NUMBER(6) NOT NULL  
 XRD\_SAMPLE\_COUNT: NUMBER(6) NOT NULL  
 XRD\_IMAGE\_COUNT: NUMBER(6) NOT NULL  
 XRF\_SAMPLE\_COUNT: NUMBER(6) NOT NULL  
 ICP\_SAMPLE\_COUNT: NUMBER(6) NOT NULL  
 CHEM\_ROCKEVAL\_SAMPLE\_COUNT: NUMBER(6) NOT NULL  
 CHEM\_CARB\_SAMPLE\_COUNT: NUMBER(6) NOT NULL  
 CHEM\_GAS\_SAMPLE\_COUNT: NUMBER(6) NOT NULL  
 CHEM\_IW\_SAMPLE\_COUNT: NUMBER(6) NOT NULL  
 SNEAR\_SLIDE\_COUNT: NUMBER(6) NOT NULL  
 SED\_THIN\_SECT\_COUNT: NUMBER(6) NOT NULL  
 VCD\_IMAGE\_COUNT: NUMBER(6) NOT NULL  
 CORE\_IMAGES\_COUNT: NUMBER(6) NOT NULL  
 CORE\_SECTION\_IMAGES\_COUNT: NUMBER(6) NOT NULL  
 CLOSEUP\_COUNT: NUMBER(6) NOT NULL  
 HRTHIN\_COUNT: NUMBER(6) NOT NULL



NonAPC\_Core

leg: NUMBER(5) NOT NULL (FK)  
 site: NUMBER(6) NOT NULL (FK)  
 hole: VARCHAR2(1) NOT NULL (FK)  
 Core: NUMBER(5) NOT NULL (FK)  
 core\_type: VARCHAR2(1) NOT NULL (FK)

pump\_1\_strokes: NUMBER(3) NULL  
 pump\_2\_strokes: NUMBER(3) NULL  
 pump\_pressure: NUMBER(4) NULL  
 bit\_rpm: NUMBER(3) NULL  
 bit\_wob: NUMBER(4,1) NULL  
 torque: NUMBER(3) NULL  
 is\_core\_jam: VARCHAR2(1) NULL  
 hard\_tool\_orient: VARCHAR2(1) NULL  
 is\_sonic\_core\_monitor: VARCHAR2(1) NULL  
 is\_active\_heave\_compensator: VARCHAR2(1) NULL  
 is\_whirl\_pack: VARCHAR2(1) NULL  
 is\_pft\_injection: VARCHAR2(1) NULL  
 mdbc\_start\_time: DATE NULL  
 mdbc\_stop\_time: DATE NULL  
 wob\_nozzle\_1: NUMBER(2) NULL  
 wob\_nozzle\_2: NUMBER(2) NULL  
 thruster\_nozzle\_1: NUMBER(2) NULL  
 thruster\_nozzle\_2: NUMBER(2) NULL  
 pcs\_initial\_surf\_press: NUMBER(6,1) NULL  
 offset: NUMBER(2) NULL

Core

leg: NUMBER(5) NOT NULL (FK)  
 site: NUMBER(6) NOT NULL (FK)  
 hole: VARCHAR2(1) NOT NULL (FK)  
 Core: NUMBER(5) NOT NULL  
 core\_type: VARCHAR2(1) NOT NULL (FK)

time\_on\_deck: DATE NULL  
 entry\_timestamp: DATE NULL  
 meter\_comp\_depth: NUMBER(6,2) NULL  
 marine\_tech\_code: VARCHAR2(60) NULL  
 marine\_tech\_comments: VARCHAR2(30) NULL  
 ops\_tech\_comments: VARCHAR2(80) NULL  
 advancement: NUMBER(7,2) NULL  
 top\_depth: NUMBER(8,2) NULL  
 is\_pump1: VARCHAR2(1) NULL  
 is\_pump2: VARCHAR2(1) NULL  
 wireline\_runs: NUMBER(4) NULL  
 wireline\_spool: VARCHAR2(1) NULL  
 drilling\_time: NUMBER(4) NULL  
 cc1: VARCHAR2(5) NULL (FK)  
 cc2: VARCHAR2(5) NULL (FK)  
 cc3: VARCHAR2(5) NULL (FK)  
 shoe1: VARCHAR2(5) NULL (FK)  
 shoe2: VARCHAR2(5) NULL (FK)  
 shoe3: VARCHAR2(5) NULL (FK)  
 core\_liner: VARCHAR2(20) NULL (FK)  
 orientation\_tool: VARCHAR2(20) NULL (FK)  
 offset: NUMBER(2) NULL  
 ops\_pri\_lith: VARCHAR2(30) NULL (FK)  
 ops\_sec\_lith: VARCHAR2(30) NULL (FK)  
 bit\_id\_null: NUMBER(4) NULL (FK)

Hole

leg: NUMBER(5) NOT NULL (FK)  
 site: NUMBER(6) NOT NULL (FK)  
 Hole: VARCHAR2(1) NOT NULL

latitude\_degrees: NUMBER(9,7) NULL  
 longitude\_degrees: NUMBER(10,7) NULL  
 pdr\_uncorrected\_depth: NUMBER(5,1) NULL  
 pdr\_corrected\_depth: NUMBER(5,1) NULL  
 matthews\_table\_area: VARCHAR2(6) NULL  
 initial\_water\_depth: NUMBER(5,1) NULL  
 final\_water\_depth: NUMBER(5,1) NULL  
 sea\_floor\_depth: NUMBER(5,1) NULL  
 sea\_floor\_determination: VARCHAR2(10) NULL (FK)  
 is\_free\_fall\_funnel: VARCHAR2(1) NULL  
 is\_reentry\_cone: VARCHAR2(1) NULL  
 is\_h\_t\_guide\_base: VARCHAR2(1) NULL  
 is\_drilled\_in\_casing: VARCHAR2(1) NULL  
 anything\_else: VARCHAR2(30) NULL  
 cork\_odp\_number: VARCHAR2(6) NULL  
 cork\_revision: VARCHAR2(10) NULL  
 cork\_comment: VARCHAR2(500) NULL  
 datetime: DATE NOT NULL  
 seismic\_fix\_mark\_julian: DATE NULL  
 seismic\_fix\_mark\_datatype: VARCHAR2(25) NULL  
 seismic\_fix\_mark\_ship\_cruise: VARCHAR2(50) NULL  
 seismic\_fix\_mark\_inventory: VARCHAR2(15) NULL  
 seismic\_fix\_mark\_latitude: NUMBER(9,7) NULL  
 seismic\_fix\_mark\_longitude: NUMBER(10,7) NULL

Splice

leg: NUMBER(5) NOT NULL (FK)  
 site: NUMBER(6) NOT NULL (FK)  
 sort\_key: NUMBER(4) NOT NULL

hole\_start: VARCHAR2(1) NULL  
 core\_start: NUMBER(5) NULL  
 core\_type\_start: VARCHAR2(1) NULL  
 section\_number\_start: VARCHAR2(2) NULL  
 top\_start: NUMBER(6,3) NULL  
 bottom\_start: NUMBER(6,3) NULL  
 mbsf\_start: NUMBER(8,3) NULL  
 mod\_start: NUMBER(8,3) NULL  
 relation: VARCHAR2(20) NULL  
 hole\_end: VARCHAR2(1) NULL  
 core\_end: NUMBER(5) NULL  
 core\_type\_end: VARCHAR2(1) NULL  
 section\_number\_end: VARCHAR2(2) NULL  
 top\_end: NUMBER(6,3) NULL  
 bottom\_end: NUMBER(6,3) NULL  
 mbsf\_end: NUMBER(8,3) NULL  
 mod\_end: NUMBER(8,3) NULL

core\_may\_be\_recovered\_as\_non

hole\_consists\_of\_cores

core\_for\_lith\_search

Search\_Lith\_Core\_Assoc

leg: NUMBER(5) NOT NULL (FK)  
 site: NUMBER(6) NOT NULL (FK)  
 hole: VARCHAR2(1) NOT NULL (FK)  
 Core: NUMBER(5) NOT NULL (FK)  
 core\_type: VARCHAR2(1) NOT NULL (FK)  
 search\_lithology: VARCHAR2(50) NOT NULL (FK)

lith\_for\_core\_lith\_search

Search\_Lith\_Type

search\_lithology: VARCHAR2(50) NOT NULL  
 search\_lith\_rock: VARCHAR2(20) NOT NULL  
 search\_lith\_group: VARCHAR2(50) NOT NULL