

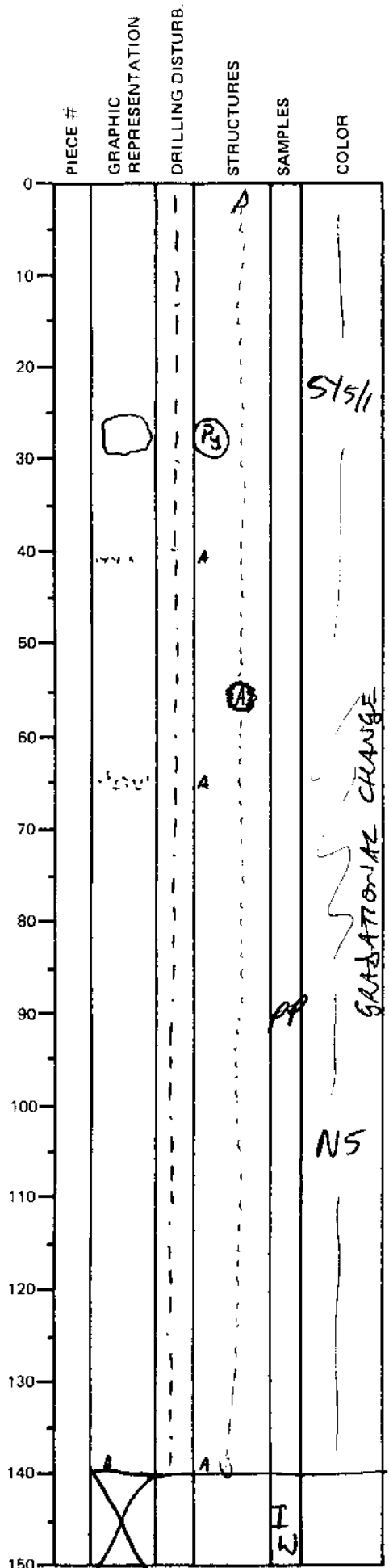
LEG	SUB	SITE	HOLE	CORE	TYPE	SEC
169		1036B		4	X	5

ODP
VISUAL CORE DESCRIPTION

SEDIMENTS / SEDIMENTARY ROCKS

SECTION DESCRIPTION

OBSERVER
ZUC/TEA



SILTY CLAY

<1% Anhydrite, RARE ANHYDRITE-RICH LAYERS.
(1-2 mm)
<<1% DISSEMINATED PYRITE.

25-30 - CONCRETION OF PYRITE & QUARTZ SANDS.

Now INDURATED (~ "BISCUITING")

LESS WELL DEVELOPED THAN PREVIOUS CORE BUT INTERVALS OF FIRM SEDIMENT THEN SOFT MUD STILL PRESENT.

BARREL SHEET
MUD WITH MINOR DISSEMINATED ANHYDRITE & V. MINOR PYRITE